



FINISHES

COLLECTION



Contents

03	About ASP Access Floors	17	ICON Data
04	Environmental Policy	18	ICON Data HPL
07	CONCEPT +	20	ICON Data Vinyl
08	CONCEPT + Terrazzo	23	Magnes®
10	CONCEPT + Porcelain	27	Eclipse®
12	CONCEPT + Concrete	31	Case Study
14	CONCEPT + Timber		

About ASP Access Floors

ASP Access Floors are a leading global company in the access flooring industry, revolutionising access flooring systems and installation. **ASP Access Floors** specialises in the manufacture, distribution and installation of access flooring solutions Worldwide.

With over 20 years experience, **ASP Access Floors** has developed and patented multiple unique access floor designs which have been used in some of the most iconic projects around the world. Ongoing research and development allows **ASP Access Floors** to produce innovative solutions that offer the market quality, versatility and infinite support.

“

We are leaders in our space, and the end result is a seamless, integrated, structural system

”

The ASP Access Floor Systems are renowned for their ability to be supremely adaptable to any job brief. The **ASP Access Floors** service, from consultation to job completion stage, is unparalleled in the access flooring marketplace, and they are renowned for it.

The blueprint of **ASP Access Floors** is a flair for innovation, which is demonstrated in all they do. They are leaders in their space, and the end result is a seamless, integrated structural system which is functional, offers lifelong durability, and shows a sustainability which **ASP Access Floors** is committed to. While delivering an unmatched high standard of quality in their products, they also ensure consistent compliance with Environmental Standards and Regulations.

A REVOLUTIONARY IDEA

ASP Access Floors provide a controlled cavity in between the slab and finished floor level where all data, power, hydraulic and fire services can be distributed. The modular design of the access floor allows the flexibility to alter a building's service layout to accommodate changing technological and space driven operations.

BUT: they work to your specs. **ASP Access Floors** are committed to delivering on not only the needs list, but also the wish list, of an Architect or Designers project plans. They are incredibly adaptable to any job presented.

Furthermore, **ASP Access Floors** is all about educating the industry on the science behind what they do, so applications are understood before the task at hand commences.

Today, our society uses access flooring in various applications such as:

- Commercial Buildings
- Data Centres
- Control/Switch and Communications Rooms
- Casinos
- Entertainment Facilities
- Education Facilities
- Medical Institutions
- Defence/Government Services

The flexibility of using an access floor system has created the perfect solution for many owners, developers, builders, designers, architects and facility managers. They work towards what you have in mind to make it happen, and offer after sales and installation accessibility to our **ASP Access Floors** team so you feel well supported all the way through your design process, project implementation and well after.

THE BENEFITS

ASP provides businesses and developers the perfect balance between optimum design and functionality.

✓ Ease of reconfiguration

The modular design of the access floor enables businesses to reconfigure their offices.

✓ Reduced costs and ease of maintenance

The cost differentiation between the installation and maintenance of traditional suspended ceiling system versus **ASP Access Floors system** are exceptionally high. Overall access floors are approximately 40% cheaper to maintain the services.

✓ Maintenance

Services can be maintained regularly and without lengthy time delays as servicemen are able to isolate and service particular zones as required, which minimises the interruptions to your workplace.

✓ Fast and efficient installation which meets the project timeline

Installing the services in the floor in lieu of the suspended ceiling system dramatically cuts the time of installation, which in turn cuts the overall project construction time.

✓ Occupant comfort

With the HVAC system installed in the floor, employees are able to individually control the air pressure and temperature through their office floor diffusers.

Environmental Policy

OUR ENVIRONMENTAL COMMITMENT

As a member of the **Green Building Council of Australia (GBCA)** and the **US Green Building Council (USGBC)**, **ASP Access Floors'** Environmental Policy outlines how ASP endeavours to use recycled materials, reduce its Carbon Footprint and optimise its supply chain.

The implementation of the policy will ensure ASP:

- Considers sustainability in all relevant decision making
- Reduces their greenhouse gas emissions
- Produces less waste and increase recycling

The aim of this policy is to incorporate ecologically sustainable development principles in every facet of design, manufacturing and installation with the introduction of the following five key objectives:



Indoor Environment Quality



Waste Management



Recycled Content



Life Cycle Analysis



Environmental Product Declaration



green building council australia

AREAS OF FOCUS

The results from the LCA and the sensitivity analysis show potential improvements to reduce ASP's access floor systems' overall environmental impacts. Areas of focus include:

- The use of certified 100% hydroelectricity at the steel manufacturing plant
- Increasing the percentage of recycled cement in the cementitious core mix
- Finding more environmental alternatives to the panel core
- Reducing the weight of the whole system to reduce both production and distribution environmental impacts
- The monitoring of freight services to ensure shipping methods with the best available technology and least environmental impact are used
- Optimising distribution routes to eliminate unnecessary transport
- Substituting truck freight with rail freight where practical

Beyond the scope of the study, **ASP Access Floors** is looking to set up a product stewardship programme to recover and recycle the access floor componentry at their end of their life.

ENVIRONMENTAL PRODUCT DECLARATION

ASP Access Floors are the first access floor company in the Southern Hemisphere to have obtained an Environmental Product Declaration (EPD®).

An Environmental Product Declaration, EPD®, is a verified document that reports environmental data of products based on life cycle assessment (LCA) and other relevant information and in accordance with the international standard ISO 14025 (Type III Environmental Declarations).

For more information and to download a copy of our ICON or URBAN EPD® visit: <https://www.environdec.com/EPD-Search>



ASP Access Floors is a global leader in manufacturing, distribution, and installation of access flooring and is completely dedicated to complying with Environmental Standards and Regulations.

The primary mission of **ASP Access Floors** is to provide all of their clients with exceptional products and service. Through research and analysing current trends and problems which occur within access floors, **ASP Access Floors** has already developed some of the most unique and effective products on the market. In fact, they are the market leader in Australia and around the world, with global expansion currently in place.

COMPLIANCE

- **ASP Access Floors** operates under the guidelines of an Environmental Management System (EMS), compliant with international standard ISO 14001.
- **ASP Access Floors** environmental product declaration (EPD) is certified in accordance with ISO 14025 and EN 15804
- **ASP Access Floors** products comply with Australian Standard AS4154 along with international standards CISCA, EN 12825, PSA MOB and DIN.

“
We are the first access floor company in the Southern Hemisphere to have obtained an Environmental Product Declaration (EPD®)
”

GREEN STAR AND LEED PROJECT PROFESSIONALS

ASP Access Floors has completed numerous **Green Star** and **Leadership in Energy and Environmental Design (LEED)** rated projects. Some of these include:

Barangaroo International Towers

Lend Lease's International Towers stand at the entrance to the Barangaroo Commercial Precinct. Comprising 300,000 m² of ASP ICON X and CONCEPT + HPL systems, the three International Towers showcase the latest in innovative and sustainable design. Barangaroo International Towers is the largest access flooring project ever undertaken in Australia. **ASP Access Floors** received CarboNZero and CEMARS Certification in response to the work they have undertaken with regards to Barangaroo International Towers and its environmental requirements. The designs for the Barangaroo International Towers have achieved a minimum 5 Star NABERS Energy rating and 6 Star Green Star Office Design and As Built (V3) Rating. **ASP Access Floors** are committed to working with the Green Building Council of Australia through our production of products with low VOC content and high recycled material content, reduced carbon emissions.

Brisbane Supreme Courts

The Brisbane Supreme Courts are a unique legal precinct and one of the largest court buildings in Australia with over 60,000 square metres of floor space spread over 19 floors. The concept of a "comfortable and healthy building" working with natural light and under floor air was designed to provide occupants maximum comfort. The Access Floor housed the air plenum and was finished in the specified specialty timber due to the complexity and highly specified project in which **ASP Access Floors** aimed to achieve outstanding results.

Medibank Head Office Melbourne

720 Bourke Street, Melbourne is a unique development comprising of 16 levels of A-Grade of office accommodation with Premium Grade Services. A true workplace evolution, with the building designed to optimise the health of its tenants. Being able to incorporate under floor air-conditioning with the ASP ICON AIR System in the space was an important component of this Green Star project, as it amplifies occupant comfort while reducing the systems energy consumption.

ANZ Head Office Docklands

The ambitious ANZ project required an Air Tight access floor system with smoke and zone baffling. Due to the design of the mechanical units, the specification required the ASP ICON AIR System to achieve each zone to be tested to comply with stringent controlled air leakage rates without floor coverings.

1 Bligh Street, Sydney

Various floor finishes such as tiling, timber, vinyl and carpet were used which dictated multiple different set-downs in the ICON X access flooring. In order to marry the floor against the curved facade of the building, our specially designed 800 x 600mm sized panels were used to achieve the vastness of the curve. Due to the building's 6 star Green Star rating, strict guidelines were placed on the percentage of recycled steel. ASP Access Floors Environmental Initiatives heavily focus on producing products with high recycled content, low VOC's and reduced carbon emissions.

Australian Catholic University, VIC

As the Australian Catholic University has been awarded the maximum 6 Star Green Star – Education Design v1 Certified rating from the Green Building Council of Australia, **ASP Access Floors** were able to comply with the sustainable nature of the project. **ASP Access Floors** aimed to use sustainable features in their floors which predominantly had a vinyl finish on top, along with housing under floor air-conditioning.

University of Adelaide

New Engineering Building – This project introduced a new concept combining ASP Access Floor's Icon Air System with an acoustic foam baffling system. The product "Soberfoam" was utilised and these 25mm foam panels and were fixed with an adhesive to the underside of each access floor panel. The foam panels were also incorporated with **ASP Access Floors'** propriatry zone baffle system to provide insulated acoustic baffles between zones.



Concept +

The **ASP Access Floors Series Concept +** leads the market by offering a unique access flooring solution that harbours design innovation and flexibility. The only limit is your imagination.

The Concept + series offers access floor panels that are pre-finished in your choice of surface finish to ensure that your design maintains functional accessibility to the services in the underfloor space such as power, data, fire and hydraulics.

Concept + offers the best of both worlds with design freedom and the practicality of access flooring combined.

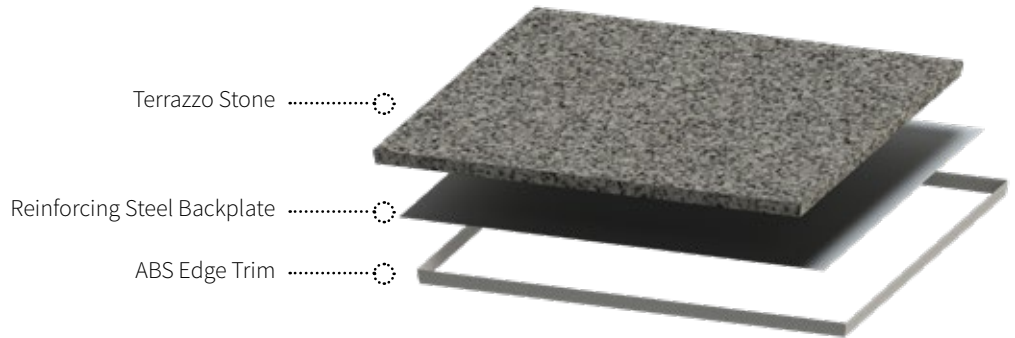
The Concept + Colour Hub is a great starting point to choosing the best finish for your design. However, if you are looking for something different, we are happy to work with you to design a specifically designed finish for your project.

CONCEPT + Terrazzo







ASP Access Floors pre-finished Terrazzo Panels in the **Concept + Series** offers the flexibility to create stunning design solutions. Beautiful, durable and easy to maintain, these panels epitomize the luxury of terrazzo floors as used worldwide throughout history.

Opulent slabs of 20mm terrazzo are pre-finished onto a 600x600mm access floor panel, ensuring that your design maintains functional accessibility to the services in the underfloor space such as power, data, fire and hydraulics.

The Terrazzo Colour Hub is a great starting point to choosing the best finish for your design. However, if you are looking for something different, we are happy to work with you to design a specifically designed mix for your project.



-  **Stylish yet practical**
-  **Robust yet exuberant**
-  **Cost-effective**
Due to lifespan, durability and maintenance
-  **Endless possibilities**
With our custom project designs
-  **Easy to maintain**
With regular sweeping, damp mopping and the occasional machine cleaning
-  **Mould free, healthy environment**
Due to its non-porous surface

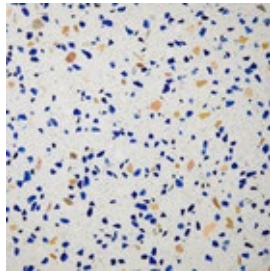
-  **Outstanding durability**
Even in high traffic areas
-  **Long life span**
-  **Recycled content**
Aggregates are a source of recycled content
-  **Low VOC material**
-  **LEED Credits**
-  **Green Star Credits**



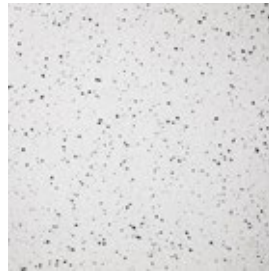
CONCEPT + Terrazzo Colour Hub



AZ-1601



AZ-2602



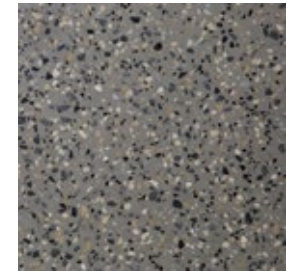
AZ-3603



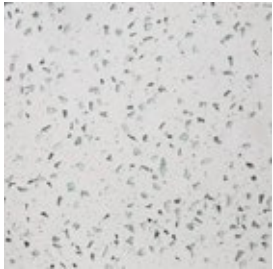
AZ-4604



AZ-5605



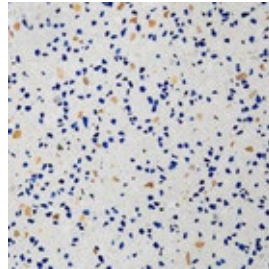
AZ-6606



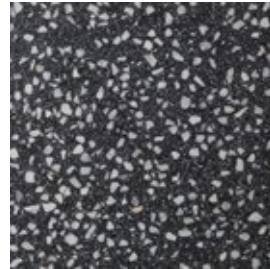
AZ-7607



AZ-8608



AZ-9609



AZ-1310



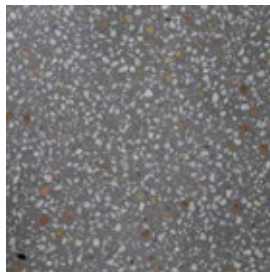
AZ-2311



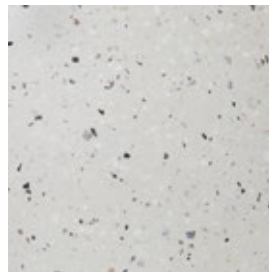
AZ-3312



AZ-4313



AZ-5314



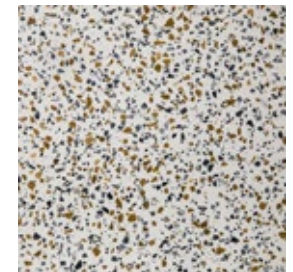
AZ-6315



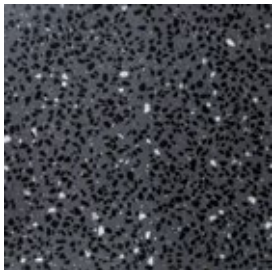
AZ-7316



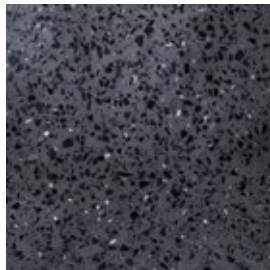
AZ-8317



AZ-9318



AZ-1719



AZ-1720

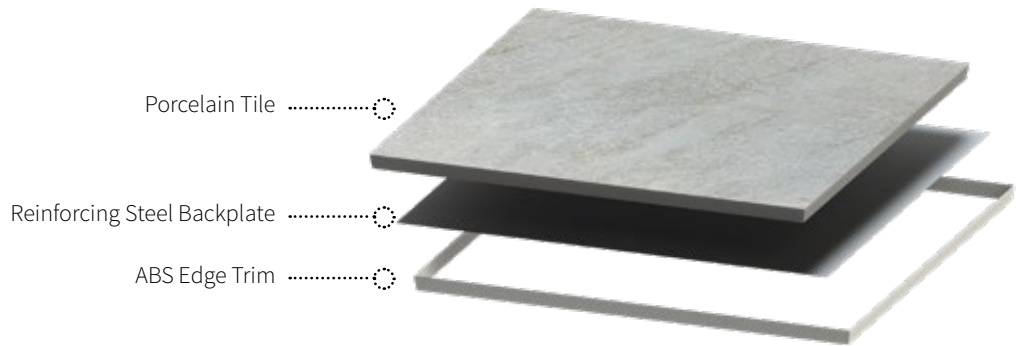
*Colours are subject to availability and minimum order quantities may apply.


CONCEPT + Porcelain

ASP Access Floors pre-finished Porcelain Panels in the **Concept + Series** provides a comprehensive range to create stunning design solutions. Beautiful, durable and easy to maintain, these panels epitomize the luxury of natural stone floors at a fraction of the cost.

Opulent 20mm thick tiles are pre-finished into a 600x600mm access floor panel, ensuring that your design maintains functional accessibility to the services in the underfloor space such as power, data, fire and hydraulics.

The Porcelain Colour Hub is a great starting point to choosing the best finish for your design. However, if you are looking for something different, we are happy to work with you to design a specifically designed mix for your project.



 **Stylish yet practical**

 **Extremely strong**

 **Non-porous structure**


 **Colour-fast**

 **Frost resistant**


 **Resistant to thermal shock**

 **Corrosion resistant**

 **Resistant**
To stains, acids and chemicals

 **Cost-effective**
Due to lifespan, durability and maintenance

 **Easy to maintain**

 **Easy to clean**

 **Anti-slip**



CONCEPT + Porcelain Colour Hub



SKY01



SKY02



SKY03



SKY04



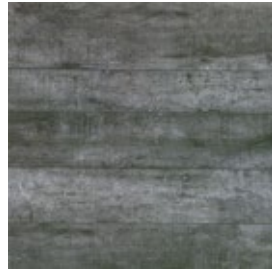
SKY05



BAB01



BAB02



BAB03



SEC01



HUN01



HUN02



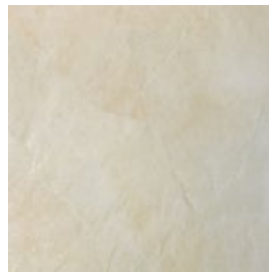
HUN03



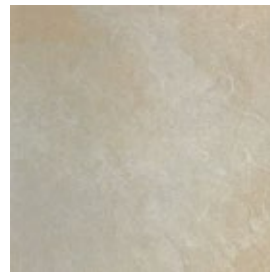
HUN04



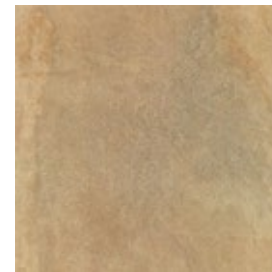
HUN05



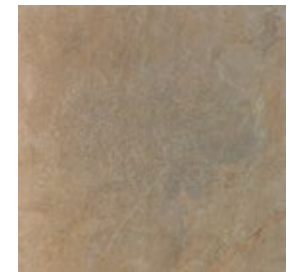
RUST01



RUST02



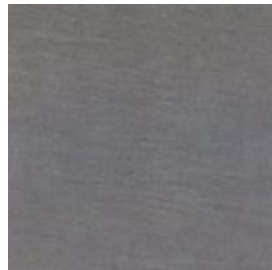
RUST03



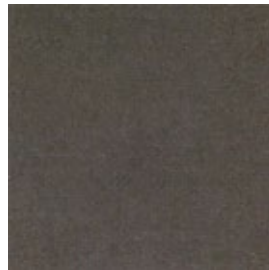
RUST04



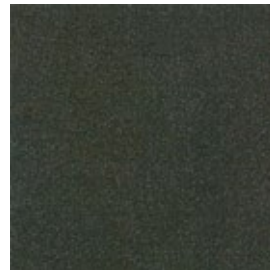
MAR01



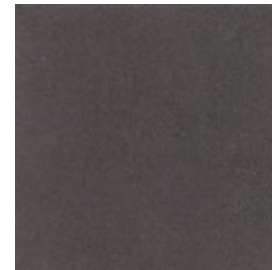
MAR02



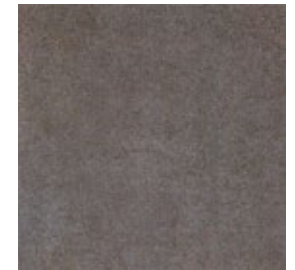
MAR03



MAR04



MAR05



MAR06

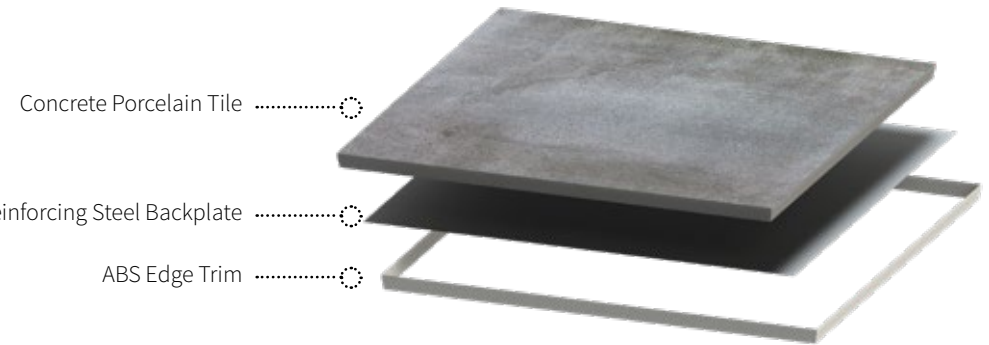
*Colours are subject to availability and minimum order quantities may apply.


CONCEPT + Concrete

The **Concept + Concrete** is a finished system providing strong, durable panels with the inherent character and beauty of concrete. Beautiful, durable and easy to maintain, these porcelain panels epitomize the luxury of natural concrete floors at a fraction of the cost.


Opulent 20mm thick porcelain tiles are pre-finished into a 600x600mm access floor panel, ensuring that your design maintains functional accessibility to the services in the underfloor space such as power, data, fire and hydraulics.

The **Concrete Colour Hub** is a great starting point to choosing the best finish for your design. However, if you are looking for something different, we are happy to work with you to design a specifically designed panel for your project.




 **Stylish yet practical**

 **Extremely strong**

 **Non-porous structure**


 **Colour-fast**


 **Frost resistant**


 **Resistant to thermal shock**

 **Corrosion resistant**

 **Resistant**
To stains, acids and chemicals

 **Cost-effective**
Due to lifespan, durability and maintenance

 **Easy to maintain**

 **Easy to clean**

 **Anti-slip**



CONCEPT + Concrete Colour Hub



VEN01



VEN02



VEN03



VEN04



VEN05

*Colours are subject to availability and minimum order quantities may apply.

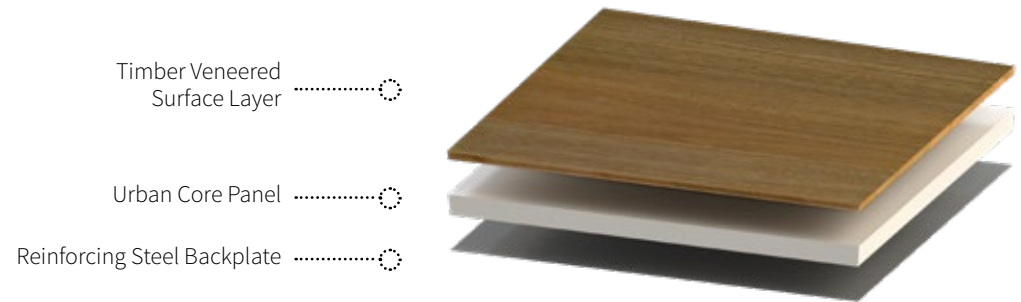
CONCEPT + Timber


The **Concept + Timber** is a finished system providing strong, durable panels with the inherent character, warmth and beauty of timber flooring. Healthy, natural and easy to maintain, these timber panels epitomize the luxury of natural timber floors whilst allowing the functionality of an access floor with 100% underfloor accessibility.


The **Concept + Timber** range is also an environment friendly option as it's not only more energy efficient than other surfaces but also uses less energy during production.

The timber species are pre-finished into a 600x600mm access floor panel, ensuring that your design maintains functional accessibility to the services in the underfloor space such as power, data, fire and hydraulics.


The **Timber Colour Hub** is a great starting point to choosing the best finish for your design. However, if you are looking for something different, we are happy to work with you to design a specifically designed panel for your project.




 **Stylish yet practical**

 **Durable and strong**

 **Healthy and natural**

 **Easy to maintain**

 **Easy to clean**

 **R10 Slip Rating**

 **Sustainable**

 **Improved air quality**



CONCEPT + Timber Colour Hub



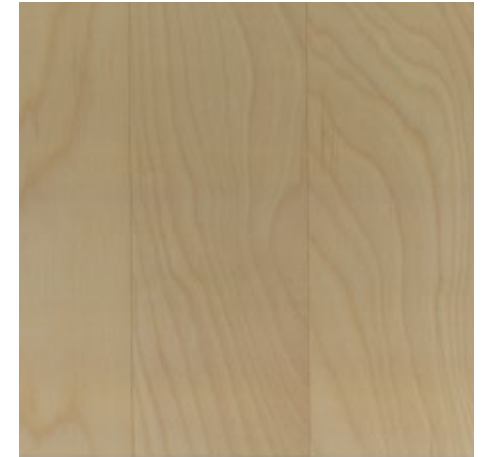
BLACKBUTT



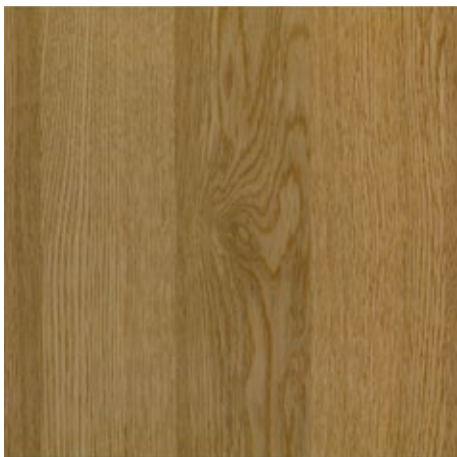
ELWOOD



HICKORY



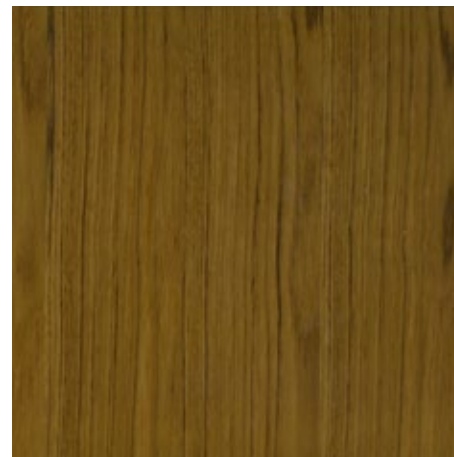
MAPLE



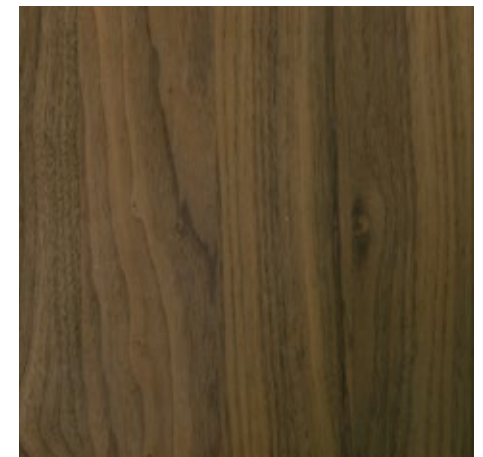
OAK



SPOTTED GUM



TEAK



WALNUT

*Colours are subject to availability and minimum order quantities may apply.



A modern laboratory or data center environment. In the foreground, there is a grey carpeted floor with several circular access floor panels. In the background, there are several robotic arms (likely for automated testing or assembly) mounted on a white structure. The room has large windows on the left side, and the ceiling is equipped with recessed lighting and various cables. The overall atmosphere is clean, professional, and technologically advanced.

ICON Data

The ASP Access Floors Series Icon Data leads offers static-dissipative commercial access flooring suitable environments such as data centres, communication rooms, medical theatres or other applications requiring ESD (electro-static discharge) properties.

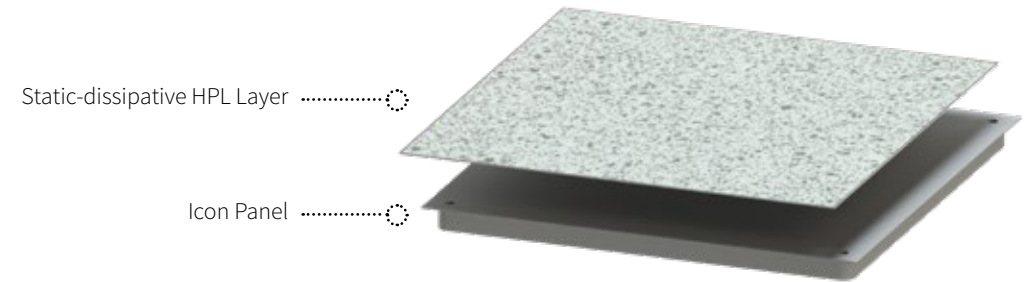
Antistatic floor finishes such as vinyl and high pressure laminate are adhered to ASP's signature Icon Panel. As the access floor panels are pre-finished in your choice of surface finish, it ensures that your design maintains full functional accessibility to the services in the underfloor space such as power, data, fire and hydraulics.







ICON Data HPL

Concept + HPL is a finished system providing static-dissipative commercial access floor panels. Anti-static, protective and risk reducing, these panels are suitable for commercial environments such as data centres, communication rooms, or other applications requiring ESD (electro-static discharge) properties. These panels allow an integrated floor finish whilst maintaining the functionality of an access floor with 100% underfloor accessibility.

The HPL is prefinished onto a 600x600mm access floor panel, ensuring that your design maintains functional accessibility to the services in the underfloor space such as power, data, fire and hydraulics.

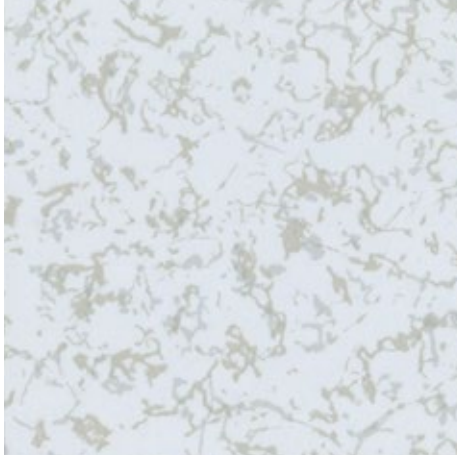
The **HPL Colour Hub** is a great starting point to choosing the best finish for your design. However, if you are looking for something different, we are happy to work with you to design a specifically designed panel for your project.



-  **Permanent antistatic properties**
-  **Good dimensional stability**
-  **Floorscore Certified**
-  **Slip-resistance**
-  **Durable and strong**
-  **Easy to maintain**
-  **Easy to clean**
-  **Non-toxic**
-  **Non-allergenic**
-  **Chemically inert**



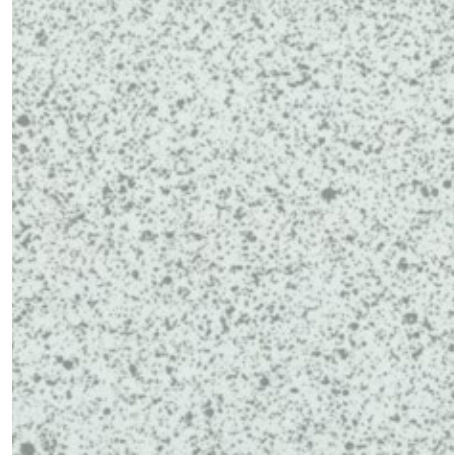
ICON Data HPL Colour Hub



VENTUS (8192)



SOLIS (2010-5)



STELLA (2103)



TERRA (2158)

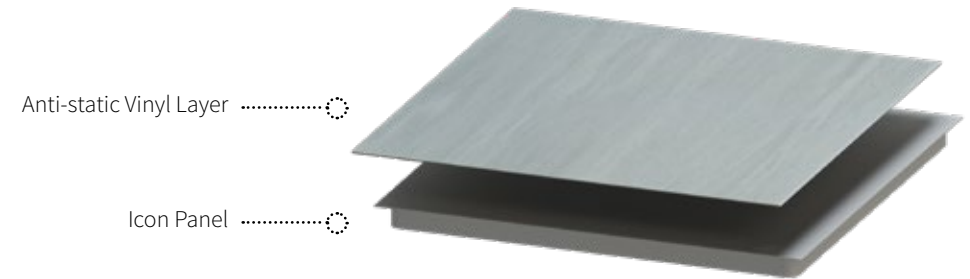
*Colours are subject to availability and minimum order quantities may apply.

ICON Data Vinyl

Concept + Vinyl is a finished system providing static-dissipative commercial access floor panels. Anti-static, protective and risk reducing, these panels are suitable for commercial environments such as data centres, communication rooms, theatres or other applications requiring ESD (electro-static discharge) properties. Sustainable and easy to maintain, these panels allow an integrated floor finish whilst maintaining the functionality of an access floor with 100% underfloor accessibility.

The vinyl is prefinished onto a 600x600mm access floor panel, ensuring that your design maintains functional accessibility to the services in the underfloor space such as power, data, fire and hydraulics.

The Vinyl Colour Hub is a great starting point to choosing the best finish for your design. However, if you are looking for something different, we are happy to work with you to design a specifically designed panel for your project.



Sustainable



FloorScore Certified



Permanent continuous electrical resistance

$106 \leq R_t \leq 109 \Omega$



Slip-resistance



Permanent antistatic properties



Durable and strong



Complies with EN 649



Easy to maintain



Indoor air quality
(TVOC after 28 days < 10µg/m3)



Easy to clean



100% recyclable



ICON Data Vinyl Colour Hub



PLATINUM (0002)



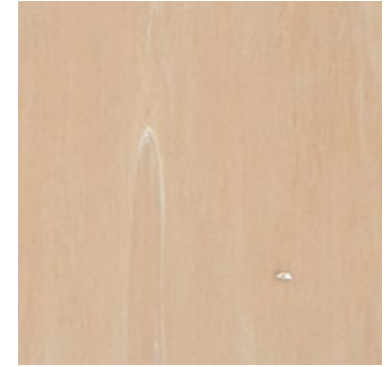
IVORY (0003)



CLAY (0004)



STEEL (0005)



HONEY (0006)



PEWTER (0013)



WHITE (0103)



STORM (0112)



GREEN (0306)

*Colours are subject to availability and minimum order quantities may apply.





Magnes®

Magnes® is an interlocking, innovative magnetic flooring system that is designed to be directly magnetically bonded to an access floor system. A stunning finished floor that epitomizes the luxury of natural timber floors whilst allowing the functionality of an access floor with 100% underfloor accessibility.

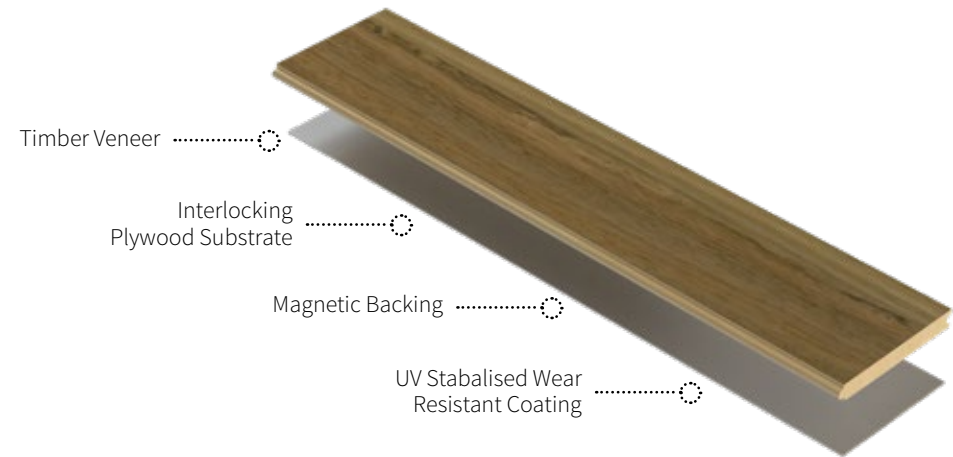
Magnes® is an interlocking, innovative magnetic flooring system that is designed to be directly magnetically bonded to an access floor system.

Healthy, natural and easy to maintain, **Magnes®** timber panels epitomize the luxury of natural timber floors whilst allowing the functionality of an access floor with 100% underfloor accessibility.

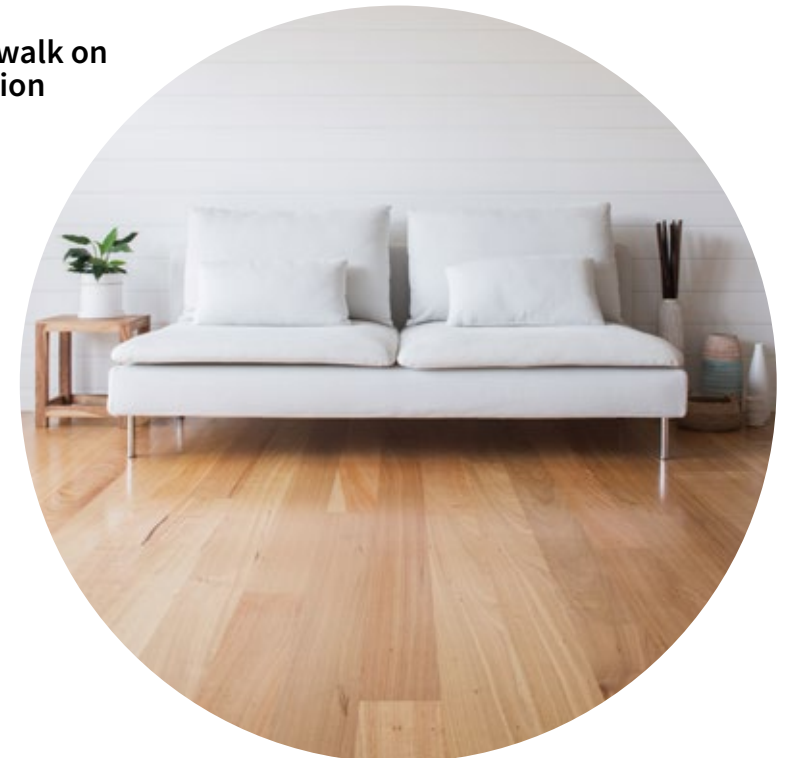
The interlocking timber planks are finished with a magnetic backing so that are able to be quickly and efficiently installed directly over your steel cementitious access floor system. The surface is immediately usable after installation.

The **Magnes®** range is also an environmentally friendly option as it's not only more energy efficient than other surfaces but also uses less energy during production.

The **Magnes® Colour Hub** is a great starting point to choosing the best finish for your design. However, if you are looking for something different, we are happy to work with you to design a specifically designed panel for your project.



-  **Quick and simple installation**
-  **Anti-slip R10 surface**
-  **Immediately walk on after installation**
-  **Access to subfloor for inspection**
-  **Simple cleaning and maintenance**
-  **Improved air quality**
-  **Removable and reusable**
-  **Functional**
-  **Easy replacement of damaged planks**
-  **Stylish yet practical**
-  **No subfloor damage during installation or removal**
-  **Strong and durable**
-  **Install over existing floors**
-  **Healthy and natural**



Magnes® Colour Hub



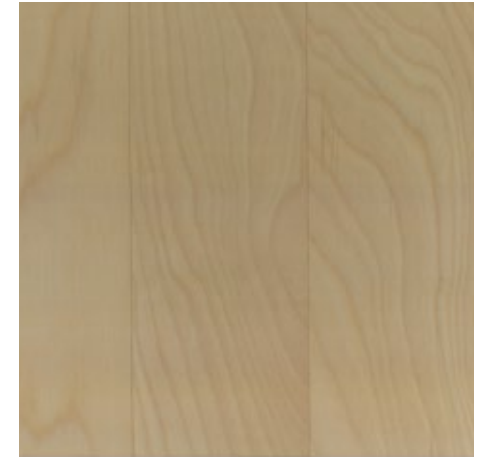
BLACKBUTT



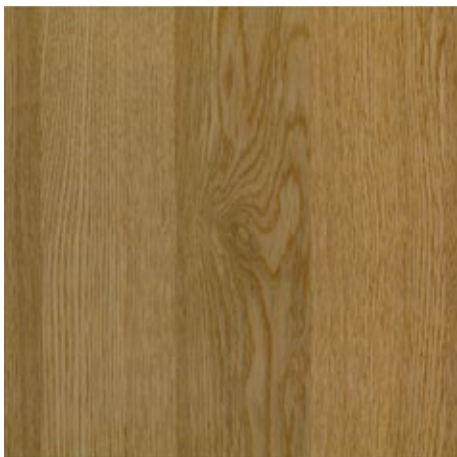
ELWOOD



HICKORY



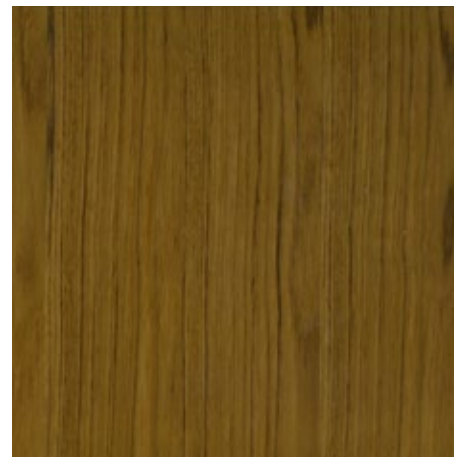
MAPLE



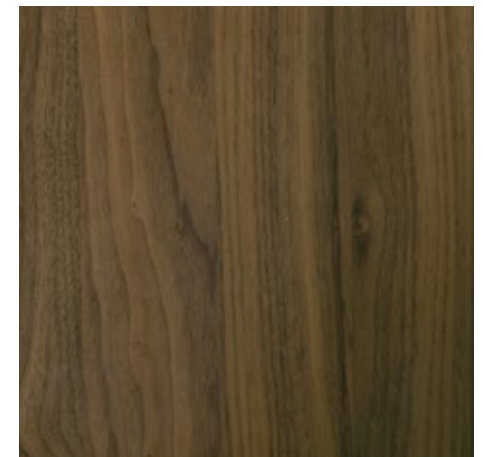
OAK



SPOTTED GUM



TEAK



WALNUT

*Colours are subject to availability and minimum order quantities may apply.





Eclipse®

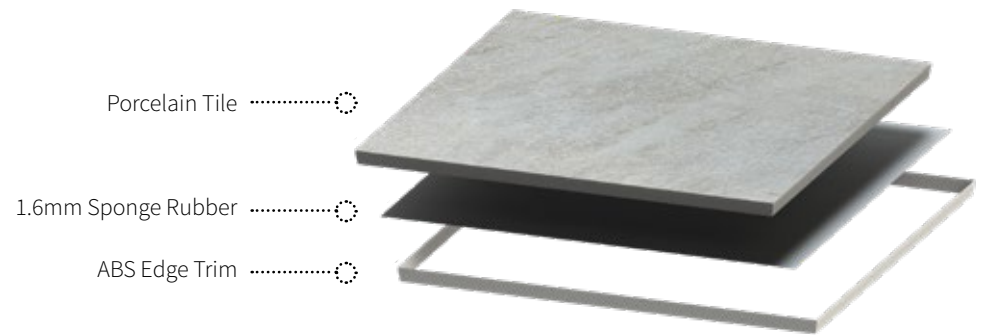
Eclipse® is an innovative floating porcelain flooring system that is designed to be directly installed over an access floor system. A stunning finished floor where the design maintains full functional accessibility to the services in the underfloor space such as power, data, fire and hydraulics.

Eclipse® is an innovative floating porcelain flooring system that is designed to be directly installed over an access floor system.

Eclipse® Porcelain Panels provides a comprehensive range to create stunning design solutions you're your existing access floor systems. Beautiful, durable and easy to maintain, these panels epitomize the luxury of natural stone floors at a fraction of the cost.

Opulent 20mm thick 600x600mm tiles are finished with an anti-slip sponge rubber underlay and an ABS plastic edge trim. These panels are installed directly over your steel cementitious access floor system ensuring that your design maintains functional accessibility to the services in the underfloor space such as power, data, fire and hydraulics.

The Eclipse® Porcelain Colour Hub is a great starting point to choosing the best finish for your design. However, if you are looking for something different, we are happy to work with you to design a specifically designed panel for your project.



Recommended Applications



General Office



Hospitality



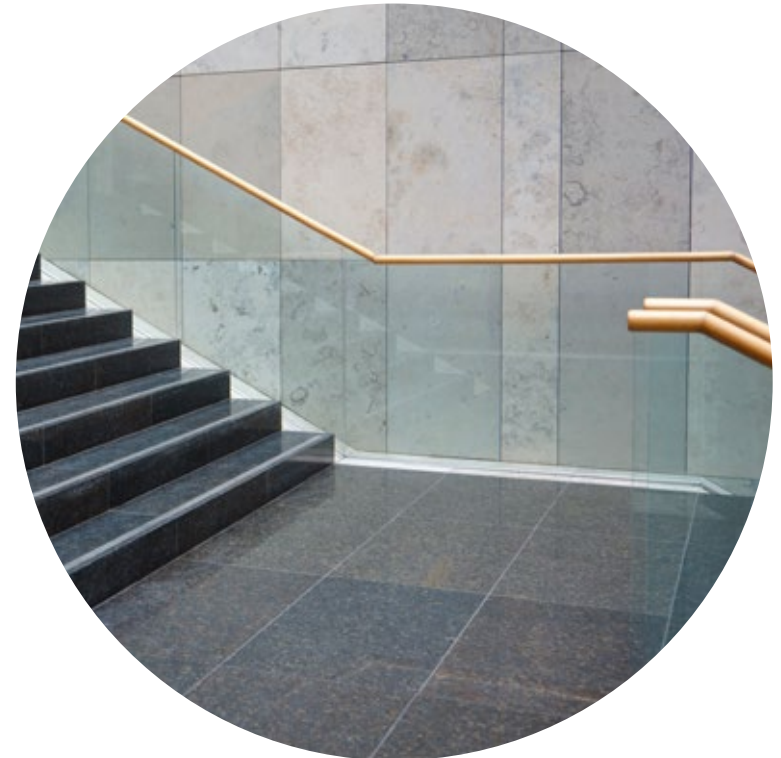
Learning Institutions



Casinos



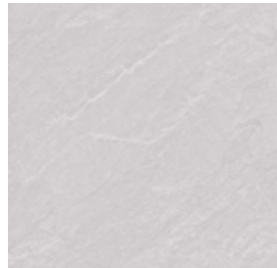
Health



Eclipse® + Porcelain Colour Hub



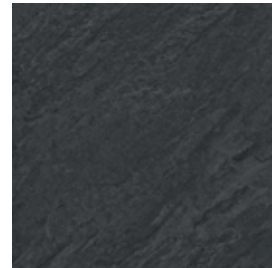
66HSY001GM



66HSY002GM



66HSY003GM



66HSY005GM



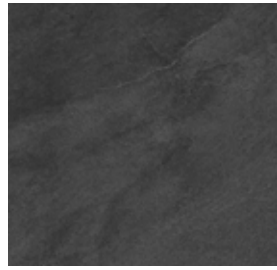
66M801GM



66M802GM



66M765GM



66M723GMA



66M722GMA



66M721GMA



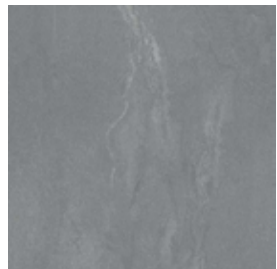
66M805GM



66M803GM



66M766GM



66M768GM



66M769GM



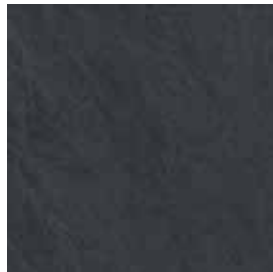
66M931GM



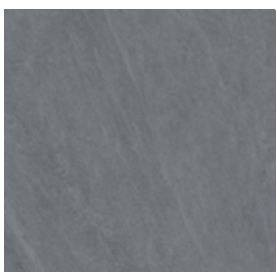
66M932GM



66M933GM



66M606GM



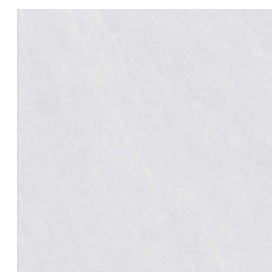
66M605GM



66M603GM



66M602GM



66M601GM



66M935GM

*Colours are subject to availability and minimum order quantities may apply.

Eclipse® + Porcelain Colour Hub



66NS101W



66NS103W



66NS105W



66M6125T



66M6120T



66M6121T



66HC307T



66M6083T



66M6082T



66M6081T



66M6123T



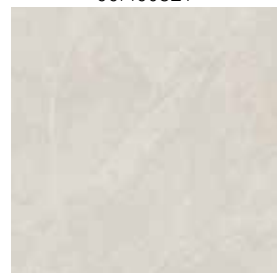
66M6122T



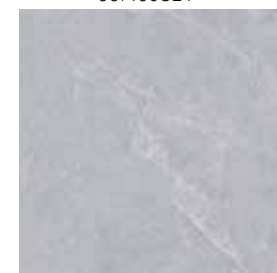
66HC308T



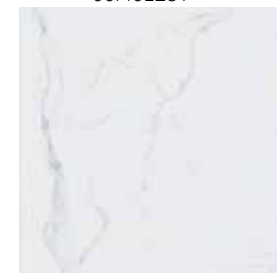
66AMN301T



66AMN302T



66AMN303T



66M6000P

*Colours are subject to availability and minimum order quantities may apply.



Case Study – ARUP 151 Clarence Street Sydney

Barrack Place, 151 Clarence Street, is home to Arup Sydney's new offices in the heart of Sydney CBD. Hassell Studios worked with Arup and Built Holdings to create a new kind of workspace focusing on wellness and sustainability.

Arup incorporated into their design a low energy, low noise underfloor displacement ventilation system, utilising 8,000m² of the **ASP Access Floors Icon Air System**. By providing air through the floor Arup have created the highest levels of indoor air quality for people and ensured no mixing of pollutants in the space.

The fitout achieved a 6 Star Green Star Interiors v1.1 Design Review Certified rating and is targeting a 5 Star NABERS Energy and 4 Star NABERS Water rating. It will use 100% green power as part of Arup's commitment to sustainability.

Open exchange areas surrounding the void create a welcoming space for employees and clients to come together. These open exchange areas showcased **ASP Access Floors new Concept + Timber** flooring with prefinished 7 strip Maple timber panels.

Specialist spaces, such as the SoundLab and Lighting Lab, were designed to support ongoing experimentation and improved decision making. These specialist spaces showcased **ASP Access Floors custom Concept + Vinyl** flooring with architect specified Forbo Marmoleum prefinished onto the ASP Urban panel.

Utility areas such as Communications and Master Control Rooms showcased **ASP Access Floors Concept + HPL** flooring with prefinished anti-static high pressure laminate.

The new Arup workplace encompasses Arup's values of being design led, collaborative, social and healthy.



Base Build
8,000m²



Maple 7 strip 1100m²

Exchange Areas
Lift lobbies
Breakout spaces

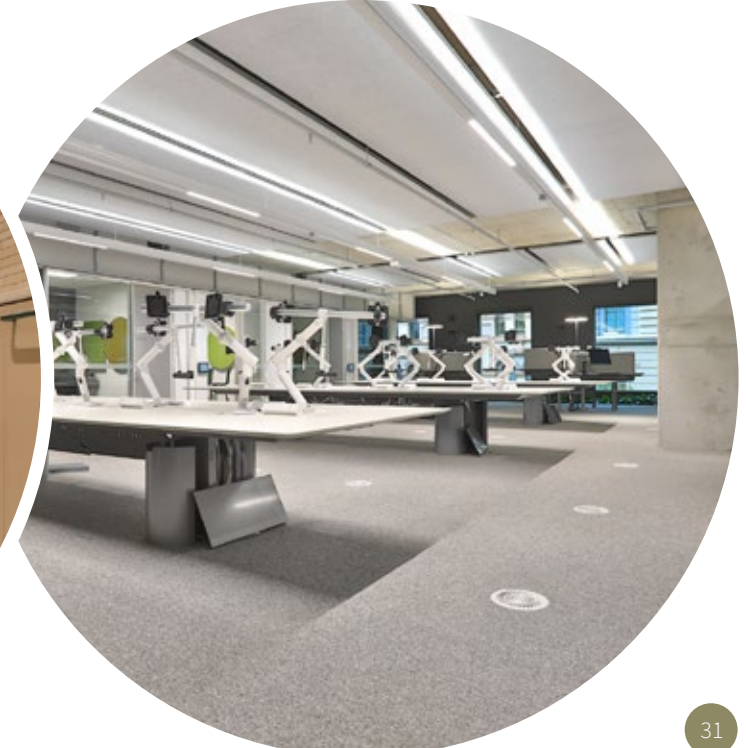
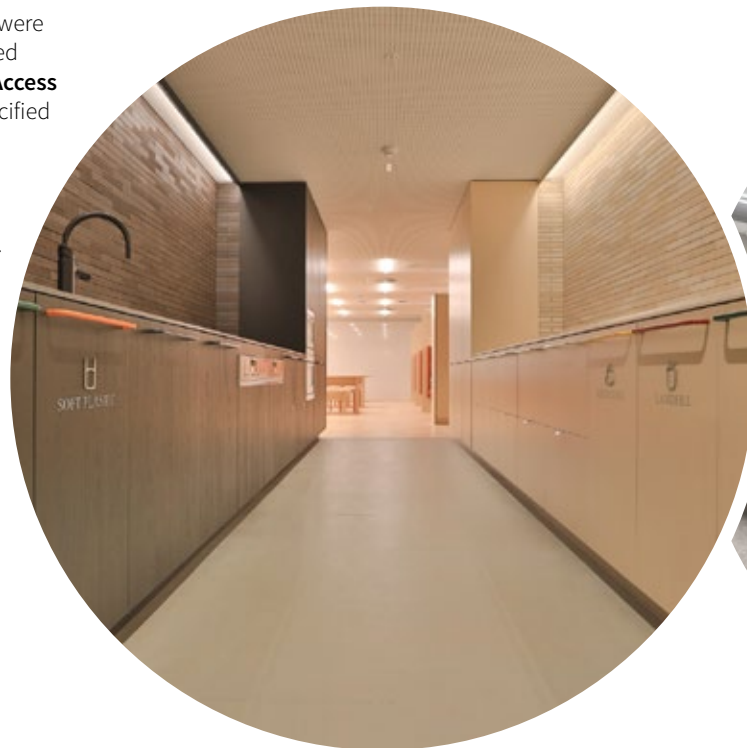


8192 50m²
MCR Rooms
Communications Rooms



Custom Finish Forbo Marmoleum 1400m²

Labs, Print Rooms, Utilities areas and Service Corridors





GLOBAL HEAD OFFICE ASP Access Floors Pty Ltd 32 Prime Drive Seven Hills, NSW 2147, Australia
Tel: +61 2 9620 9915 **Fax:** +61 2 9620 9918 **Email:** sales@aspfloors.com.au **Web:** www.aspfloors.com.au

