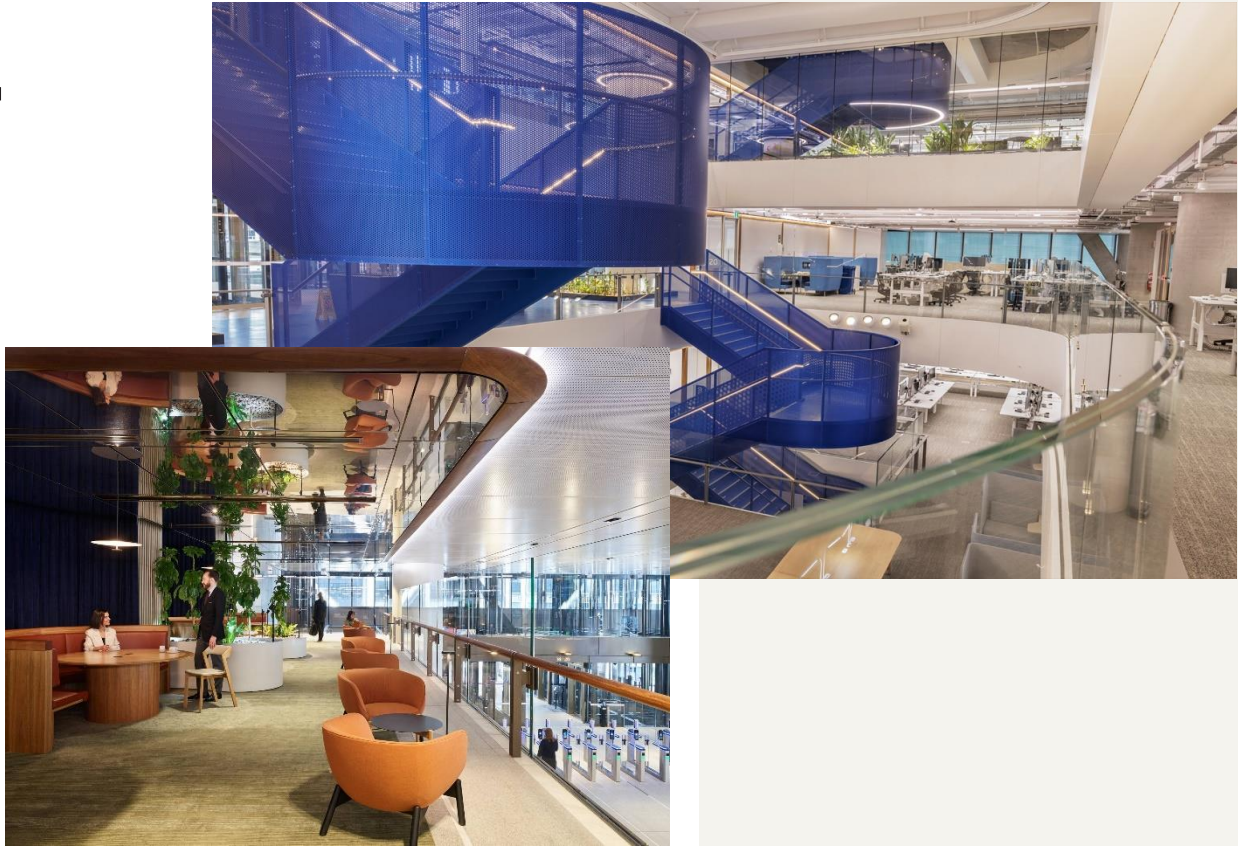


Martin Place Metro North Tower

Sydney NSW



Project Exclusive

The Martin Place Metro North Tower is not merely a building; it is a symbol of Sydney's evolving urban landscape. This iconic development stands as a cornerstone of the Martin Place integrated station precinct, showcasing a harmonious blend of modern architecture, sustainable practices, and thoughtful urban planning.

Designed as a state-of-the-art commercial tower, the North Tower merges aesthetics with functionality. Its sleek, contemporary design reflects Sydney's dynamic growth, while its intelligent structure accommodates the demands of a thriving business hub. From expansive office spaces to interconnected public areas, every aspect of the tower reflects innovation and purpose. The tower's design highlights flexibility, sustainability, and connectivity, reflecting its role as a key piece of Sydney's urban future.

THE WHO'S WHO

CLIENT

Martin Place Metro

ARCHITECT

Fosters + Partners

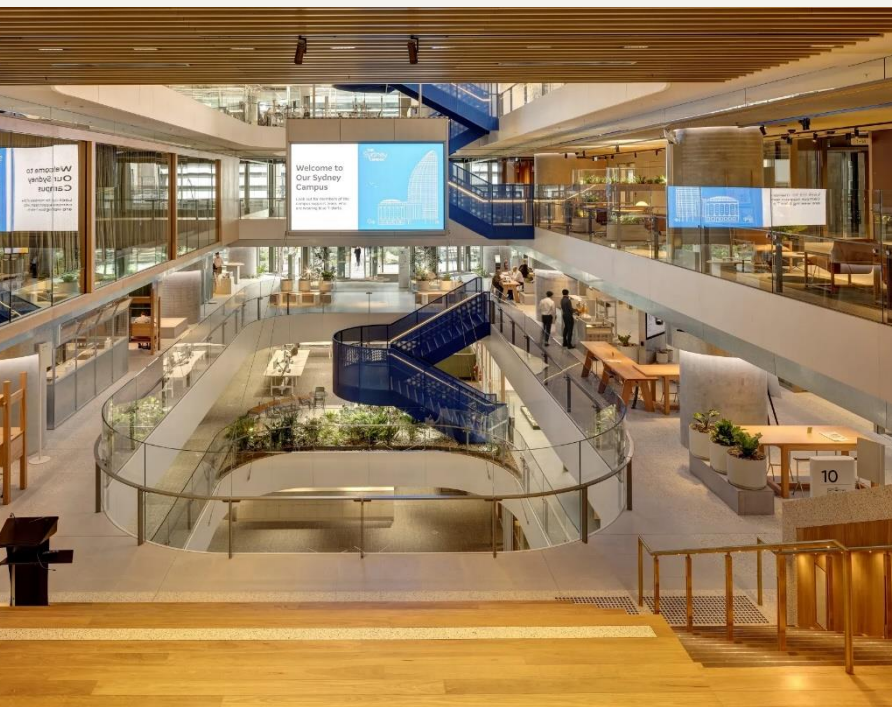
BUILDER

Lendlease

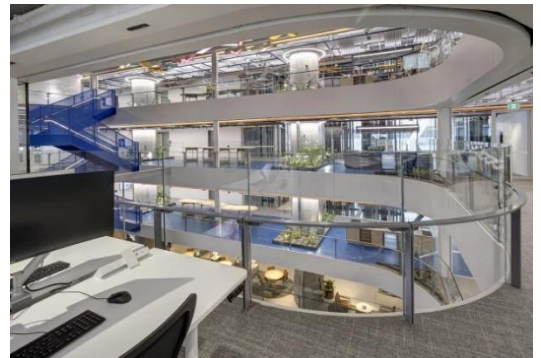
The Access Floor Scoop

ASP Access Floors was proud to supply and install 60,000m² of Icon Air and Icon Data HPL throughout the office and communications spaces in the North Tower, playing a critical role in delivering adaptable and efficient spaces. The project was completed in collaboration with a dynamic team, successfully overcoming complex challenges posed by the building's unique requirements.

One notable challenge was the development of a custom bridging system to adapt to the building's structure. This modified system was engineered to fit within the 350mm floor height, accommodating heavy cabling and air-conditioning ducts while maintaining functionality and performance.



Sustainability Trends



AUSTRALASIA **EPD**[®]
ENVIRONMENTAL PRODUCT DECLARATION

 greenstar

 NABERS

Did You Know

6 Star Green Star Rating

The build utilised materials with low embodied carbon, such as **recycled steel and sustainably sourced timber.**

Custom ASP Bridging System utilised throughout the installation

Featured Products

ICON AIR

ICON AIR is specifically designed for environments using an underfloor HVAC (heating, ventilation, and air conditioning) system.

ICON DATA HPL

ICON Data HPL is a finished system providing static-dissipative access floor panels.