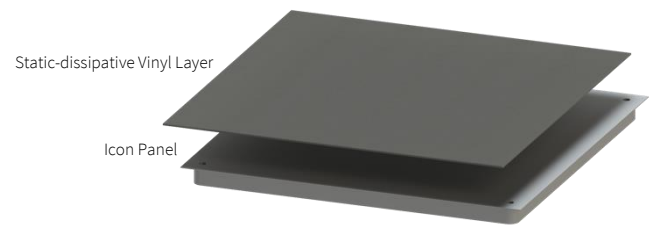


DATA SERIES ICON DATA VINYL

RECOMMENDED APPLICATIONS



DATA CENTRES SERVER ROOMS



<p>SYSTEM NAME Icon Data Vinyl Heavy Industrial Grade 11.0kN</p> <p>DESCRIPTION Icon Data Vinyl is a finished system designed for Computer and Data Centre environments. It can be used for mapping and distributing cabling, data and other electrical services in the sub-floor.</p> <p>The Icon Data Vinyl system has a Dissipative Anti-static 2mm Vinyl surface finish. The Vinyl protects against voltage shorts that can occur with electrical equipment and creates an electrostatic discharge to help prevent buildup of the static electricity which could damage equipment.</p> <p>COMPLIANT STANDARDS Australian Standard AS4154/AS4155 Australian Standard AS1170 NATA Testing Certification ISO9239-1-2003 EN12825-2001 DIN4102-1-1998</p>	<p>CORE Cementitious Compound</p> <p>FINISH Gerflor Mipolam Robust EL7 Dissipative Anti-static 2mm Vinyl surface finish.</p> <p>CONSTRUCTION The panels consist of a hardened steel top and bottom sheet plate with corrosion resistant protection, inside and out, encapsulating a structural cementitious core.</p> <p>TOLERANCE ±0.25mm and a flatness tolerance of ±0.5mm measured on a diagonal across the top of the panel</p> <p>CONNECTION The panel is gravity held on top of the stringer assembly.</p> <p>SIZE 600mm x 600mm</p> <p>DEPTH 34.6mm</p>
---	---

PERFORMANCE TO STANDARDS GUIDE PER AS4154 – 1993 AUSTRALIAN STANDARD – GENERAL ACCESS FLOORS

Load Level	Panel (kg)	System (kg/m ² at 450mm FFH)
11.0kN Heavy Industrial Grade	20.06	64.4
STATIC PERFORMANCE (kN)		
Concentrated	Impact	Ultimate
11.0	0.4	33.0
DYNAMIC PERFORMANCE (kN) - Passes		
10 passes (wheel size 75x25mm)	10,000 passes (wheel size 150x50mm)	40,000 passes (wheel size 200x75mm)
8.9	6.7	2.25
<p>Safety Factor: Panels must provide a minimum safety factor of three (3) times the concentrated load specified above in accordance with Australian Standards AS4154-1993</p>		



<p>PEDESTAL SIZE 100mm x 100mm base plate</p> <p>PEDESTAL CONSTRUCTION Hot dipped galvanised steel pedestal base, head and rod. Finished with an ABS locating gasket.</p> <p>PEDESTAL LOCKING The pedestals will be provided with an adjusting and locking nut to maintain the assembly at a selected height, which requires a deliberate action to change the height setting, and which prevents vibration displacement.</p>	<p>PEDESTAL FINISH Hot dipped galvanized finish.</p> <p>PEDESTAL CONNECTION The panel is gravity held on top of the stringer assembly.</p> <p>PEDESTAL FINISHED FLOOR HEIGHT (FFH) The finished floor height of the access floor is measured from the sub floor to the top surface of the installed access floor.</p>	<p>STRINGER SIZE 31mm x 21mm x 1.2mm x 600mm</p> <p>STRINGER CONSTRUCTION Rectangular steel welded tube with 1.6mm sponge rubber foam.</p> <p>STRINGER FINISH Hot dipped galvanized finish.</p> <p>STRINGER CONNECTION The stringer is screw fixed to the pedestal head.</p>
---	---	--

DESCRIPTION

Total thickness	EN ISO 24346	mm	2.00
Weight	EN ISO 23997	g/m ²	3300
Width of sheet	EN ISO 24341	cm	200
Length of sheet	EN ISO 24341	lm	20
Tile size	EN ISO 24342	mm	608 x 608
Number of tiles per package		-	20

CLASSIFICATION

Standard / Product specification	-	-	EN ISO 10581
European classification	EN ISO 10874	class	34 - 43
Fire rating	EN 13501-1	class	B _{fl} -s1
Electrical resistance (1)	EN 1081	Ohm	10 ⁶ ≤ Rt ≤ 10 ⁸
Electrical resistance	ASTM F 150	Ohm	10 ⁶ ≤ Rt ≤ 10 ⁹ (2)
Static electrical propensity	EN 1815	kV	< 2






PERFORMANCE

Type Binder content	EN ISO 10581	type	II
Dimensional stability	EN ISO 23999	%	sheet ≤ 0.40 tile ≤ 0.25
Residual indentation (norm)	EN ISO 24343-1	mm	≤ 0.10
Residual indentation (average measured value)	-	mm	~ 0,03
Castor chair test (type W)	ISO 4918	-	OK
Thermal conductivity	EN ISO 10456	W/(m.K)	0.25
Colour fastness	EN 20 105 - B02	degree	≥ 6
Chemical products resistance	EN ISO 26987	-	OK

ENVIRONMENT / INDOOR AIR QUALITY

TVOC after 28 days	ISO 16000-6	µg/ m ³	< 10
--------------------	-------------	--------------------	------

CE MARKING

	EN 14041	-	  
		-	

(1) Measured before installation

(2) If RH level is > 40%