



STEEL CEMENTITIOUS RIGID GRID SYSTEM

RECOMMENDED APPLICATIONS



HIGH TRAFFIC AREAS



CASINO'S



BANKS



TIERED SEATING/STAGES

SYSTEM NAME

Steel Cementitious Rigid Grid System

SYSTEM CODE

SC-RG

COMPLIANT STANDARDS

 Australian Standard AS4154/AS4155
 Australian Standard AS1170
 CISCA Standard UFGS-09 69 11/15
 PSA MOB PF2 1992
 NATA Testing Certification
 ISO9239-1-2003
 EN12825-2001
 DIN4102-1-1998

DESCRIPTION

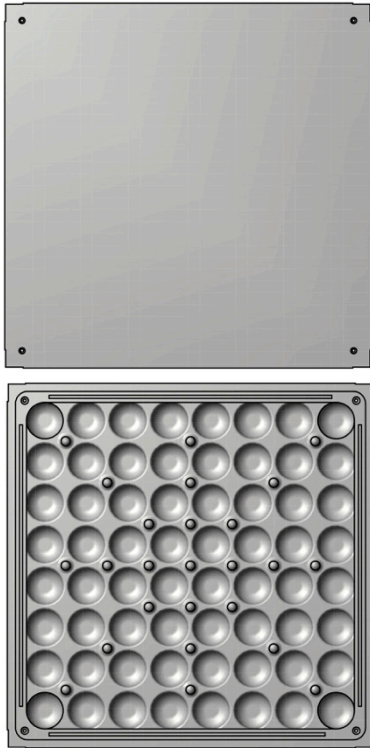
The Steel Cementitious Rigid Grid System has been designed for pre finished flooring or office areas that require a more rigid installation.

SPECIFIERS GUIDE

The adjacent table details how to nominate the ASP Rigid Grid System in your project specification.

SYSTEM NAME	Steel Cementitious Rigid Grid System
SYSTEM CODE	SC-RG
PANEL LOAD TOLERANCE	e.g. AS Medium Grade 3.0kN
PANEL FINISH	Bare
FINISHED FLOOR HEIGHT (FFH)	e.g. 150mm

ACCESS FLOOR PANEL



TYPE	SC Series – Steel Cementitious
SIZE	The panels are 600mm x 600mm in size and are interchangeable with other panels. Also available are a series of load bearing finishing panels designed to minimise small off cuts experienced when cutting around columns, curved building designs and finishing off near perimeter walls. These finishing panels come in 600 x 800mm and 600 x 300mm sizes.
DEPTH	33mm
CONSTRUCTION	The panels consist of a hardened steel top and bottom sheet plate with corrosion resistant protection, inside and out, encapsulating a structural cementitious core.
CORE	Cementitious Compound
TOLERANCE	±0.25mm and a flatness tolerance of ±0.5mm measured on a diagonal across the top of the panel
FINISH	ASP's standard powder coated finish.
CONNECTION	The panel is screw fixed to the pedestal head at all four corners

PANEL LOAD TOLERANCES

AUSTRALIAN STANDARD (AS)

LOAD LEVEL	PANEL (KG)	SYSTEM (KG/M ² at 150mm FFH)	STATIC PERFORMANCE (kN)			DYNAMIC PERFORMANCE (kN) - Passes			
			CONCENTRATED	IMPACT	ULTIMATE	10 (WHEEL SIZE 75X25MM)	10,000 (WHEEL SIZE 150X50MM)	40,000 (WHEEL SIZE 200X75MM)	UNIFORM (kPa/m ²)
Medium Grade 3.0kN	13.5	40.9	3.0	0.4	9.0	3.0	2.7	2.25	N/A
Heavy Grade 4.5kN	14.2	42.8	4.5	0.4	13.5	4.4	3.3	2.25	N/A
Extra Heavy Grade 6.0kN	15.5	46.5	6.0	0.4	18.0	5.5	4.4	2.25	N/A

Safety Factor: Panels must provide a minimum safety factor of 3 times the concentrated load specified above in accordance with AS4154-1993.

CISCA STANDARD

LOAD LEVEL	PANEL (KG)	SYSTEM (KG/M ² at 150mm FFH)	STATIC PERFORMANCE (kN)			DYNAMIC PERFORMANCE (kN) - Passes			
			CONCENTRATED	IMPACT	ULTIMATE	10 (WHEEL SIZE 75X30MM)	10,000 (WHEEL SIZE 152X51MM)	40,000 (WHEEL SIZE 200X75MM)	UNIFORM (kPa/m ²)
Heavy Grade 4.45kN (1000LBS)	14.3	43.1	4.45 (1000LBS)	0.67 (150LBS)	6.23 (1400LBS)	3.56 (800LBS)	2.67 (600LBS)	N/A	11.97 (250psf)
Extra Heavy Grade 5.56kN (1250LBS)	15.2	45.6	5.56 (1250LBS)	0.67 (150LBS)	8.01 (1800LBS)	4.45 (1000LBS)	3.56 (800LBS)	N/A	14.36 (300psf)
Industrial Grade 6.67kN (1500LBS)	17.6	52.3	6.67 (1500LBS)	0.67 (150LBS)	11.12 (2500LBS)	5.56 (1250LBS)	4.45 (1000LBS)	N/A	16.76 (250psf)
Heavy Industrial Grade 8.9kN (2000LBS)	19.1	56.5	8.9 (2000LBS)	0.67 (150LBS)	12.45 (2800LBS)	6.67 (1500LBS)	5.34 (1200LBS)	N/A	19.15 (400psf)
Super Industrial Grade 11.12kN (2500LBS)	20.0	59.0	11.12 (2500LBS)	0.67 (150LBS)	13.79 (3100LBS)	8.89 (2000LBS)	7.11 (1600LBS)	N/A	23.94 (500psf)

Safety Factor: Panels must provide a minimum safety factor of 5 times the uniform load specified above in accordance with ICC-ES AC300.

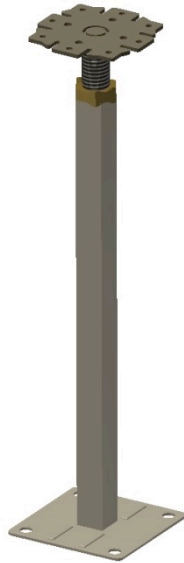
PSA MOB STANDARD

LOAD LEVEL	PANEL (KG)	SYSTEM (KG/M ² at 150mm FFH)	STATIC PERFORMANCE (kN)		
			CONCENTRATED	IMPACT	UNIFORM (kN/m ²)
Medium Grade 3.0kN	13.2	40.1	3.0kN	0.4	6.7
Heavy Grade 4.5kN	14.1	42.6	4.5kN	0.4	12.0

Safety Factor: Panels must provide a minimum safety factor of 3 times the concentrated load specified above in accordance with PSA MOB PF2 1992.

ACCESS FLOOR PEDESTALS
**FINISHED
 FLOOR HEIGHT
 (FFH)**
FIELD PEDESTAL/
PERIMETER PEDESTAL
S8

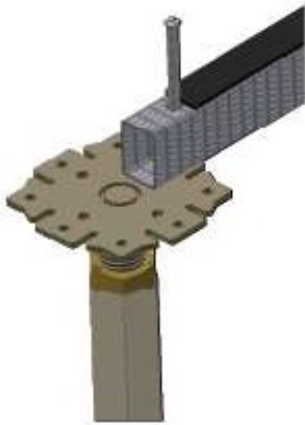
FFH 110 - 1200mm


S11

FFH 1200+



SIZE	10,000mm ² base plate
CONSTRUCTION	Steel pedestal base and nickel chrome plated head assembly with a zinc electro-plated rod.
LOCKING	The pedestals will be provided with an adjusting and locking nut to maintain the assembly at a selected height, which requires a deliberate action to change the height setting, and which prevents vibration displacement.
FINISH	ASP's standard powder coated finish.
CONNECTION	The panel and stringer are screw fixed to the pedestal head at all four corners
FINISHED FLOOR HEIGHT (FFH)	The finished floor height of the access floor is measured from the sub-floor to the top surface of the installed access floor.

ACCESS FLOOR STRINGERS


TYPE	SG6
SIZE	600mm
CONSTRUCTION	The steel stringers shall be 31mm x 21mm x 1.2mm rectangular welded tube. The stringers shall be provided with a 3mm sponge rubber foam to provide sound absorbing buffer between the stringer and the panel.
FINISH	Galvanized steel
CONNECTION	The bridging stringer is screw fixed to the pedestal head so that the entire system is engaged as a structural membrane.