

CONCEPT + SERIES CONCRETE

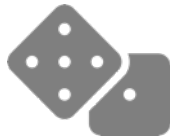
RECOMMENDED APPLICATIONS



GENERAL
OFFICE



LEARNING
INSTITUTIONS



CASINOS



HOSPITALITY



HEALTH

SYSTEM NAME

SYSTEM NAME

Concept + Concrete
4.5kN Heavy Grade Australian Standard
600mm x 600mm

COMPLIANT STANDARDS

Australian Standard AS4154/AS4155
Australian Standard AS1170
CISCA Standard UFGS-09 69 11/15
PSA MOB PF2 1992
NATA Testing Certification
ISO9239-1-2003
EN12825-2001
DIN4102-1-1998

DESCRIPTION

The Concept + Concrete is a finished system utilising a concrete look porcelain tile. Beautiful, durable and easy to maintain, whilst ensuring functional accessibility to the services in the underfloor space such as power, data, fire and hydraulics.

The ASP range of concrete porcelain panels is a great starting point to choosing the best finish for your design. However, if you are looking for something different, we are happy to work with you to design a specifically designed mix for your project.

SPECIFIERS GUIDE – COPY AND PASTE THIS INTO YOUR OWN GUIDE

This details how to nominate the ASP Concept + Concrete in your project specification.

SYSTEM NAME
PANEL LOAD TOLERANCE
RELEVANT STANDARD
PANEL FINISH
FINISHED FLOOR HEIGHT (FFH)

Concept + Concrete
4.5kN Heavy Grade
Australian Standard
Please select from the Concrete Colour Hub
60mm - 1200mm

ACCESS FLOOR PANEL

TYPE

Concept + Concrete

SIZE

The panels are 600mm x 600mm in size and are interchangeable with other panels.

DEPTH

20mm Concrete Tile with Steel Back Plate

CONSTRUCTION

The panels consist of a lower sheet of reinforcing 0.5mm galvanised steel that is adhered to the underside of the Concrete tile and finished with an ABS edge trim.

CORE

Porcelain

FINISH

Matt

SLIP RESISTANCE

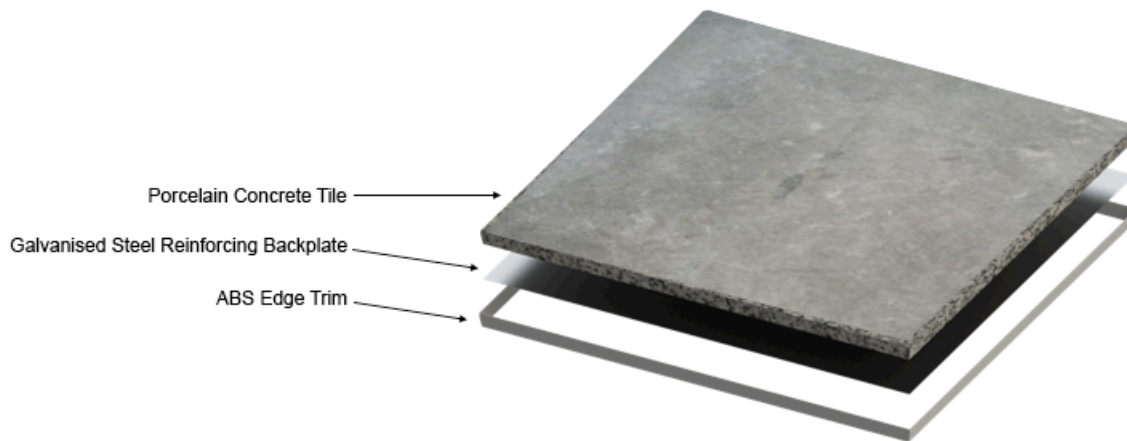
R10

SEALING

Factory sealed

CONNECTION

The panel is gravity held on the pedestal heads at all four corners on the ASP Rigid Grid System.

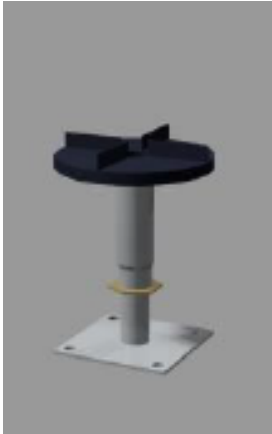


PERFORMANCE TO STANDARDS GUIDE PER AS4154 – 1993 Australian Standard – General Access Floors

Load Level	Panel (kg)	System (kg/m ² at 150mm FFH)	STATIC PERFORMANCE (kN)			DYNAMIC PERFORMANCE (kN) - Passes			
			Concentrated	Impact	Ultimate	10 passes (wheel size 75x25mm)	10,000 passes (wheel size 150x50mm)	40,000 passes (wheel size 200x75mm)	Uniform (kPa/m ²)
4.5kN Heavy Grade	23	67.86	4.5	0.4	11.3	4.4	3.3	2.25	N/A

Safety Factor: Panels must provide a minimum safety factor of three (3) times the **concentrated** load specified above in accordance with Australian Standards AS4154-1993.

PEDESTALS



S16

FFH 60-1200mm

RIGID GRID UNDERSTRUCTURE



SIZE

10,000mm² base plate

CONSTRUCTION

Steel pedestal base and steel head assembly with a galvanised steel rod complete with ABS Gasket.

LOCKING

The pedestals will be provided with an adjusting and locking nut to maintain the assembly at a selected height, which requires a deliberate action to change the height setting, which prevents vibration and displacement.

CONNECTION

Utilises the ASP Rigid Grid Understructure with pedestals and stringers, allowing the panel to be gravity laid.

FINISHED FLOOR HEIGHT (FFH)

The finished floor height of the access floor is measured from the sub floor to the top surface of the installed access floor.

ENVIRONMENTAL PRODUCT DECLARATION (EPD®)

ASP Access Floors are the only access floor company in the Southern Hemisphere to have obtained an Environmental Product Declaration (EPD®).

An Environmental Product Declaration, EPD®, is a verified document that reports environmental data of products based on life cycle assessment (LCA) and other relevant information, and in accordance with the international standard ISO 14025 (Type III Environmental Declarations).

For builders, developers and their corporate and government clients, the data and information in an EPD provide a framework for making informed product comparisons to help make buildings and infrastructure more sustainable.

For this reason, Australasian EPD's are recognised by the Green Building Councils of Australia and New Zealand, as well as the Infrastructure Sustainability Council of Australia.

The Green Building Council of Australia (GBCA) recognises that Australasian EPDs may be used by project teams using the Design & As Built and Interiors rating tools to obtain Green Star points under the following credits:

- Materials > Product Transparency and Sustainability.
- Materials > Life Cycle Assessment: By providing data for an EN 15978 compliant whole-of-building whole-of-life assessment.
- Innovation Challenge > Responsible Carbon Impact: By providing embodied carbon impacts (i.e. data on Global Warming Potential) which can be used in the calculation and reduction of the total embodied carbon impacts of a project.

CONTACT US

Global Head Office ASP Access Floors Pty Ltd

32 Prime Drive
Seven Hills NSW Australia 2147

Tel: +61 2 9620 9915

Fax: +61 2 9620 9918

Email: sales@aspfloors.com.au

